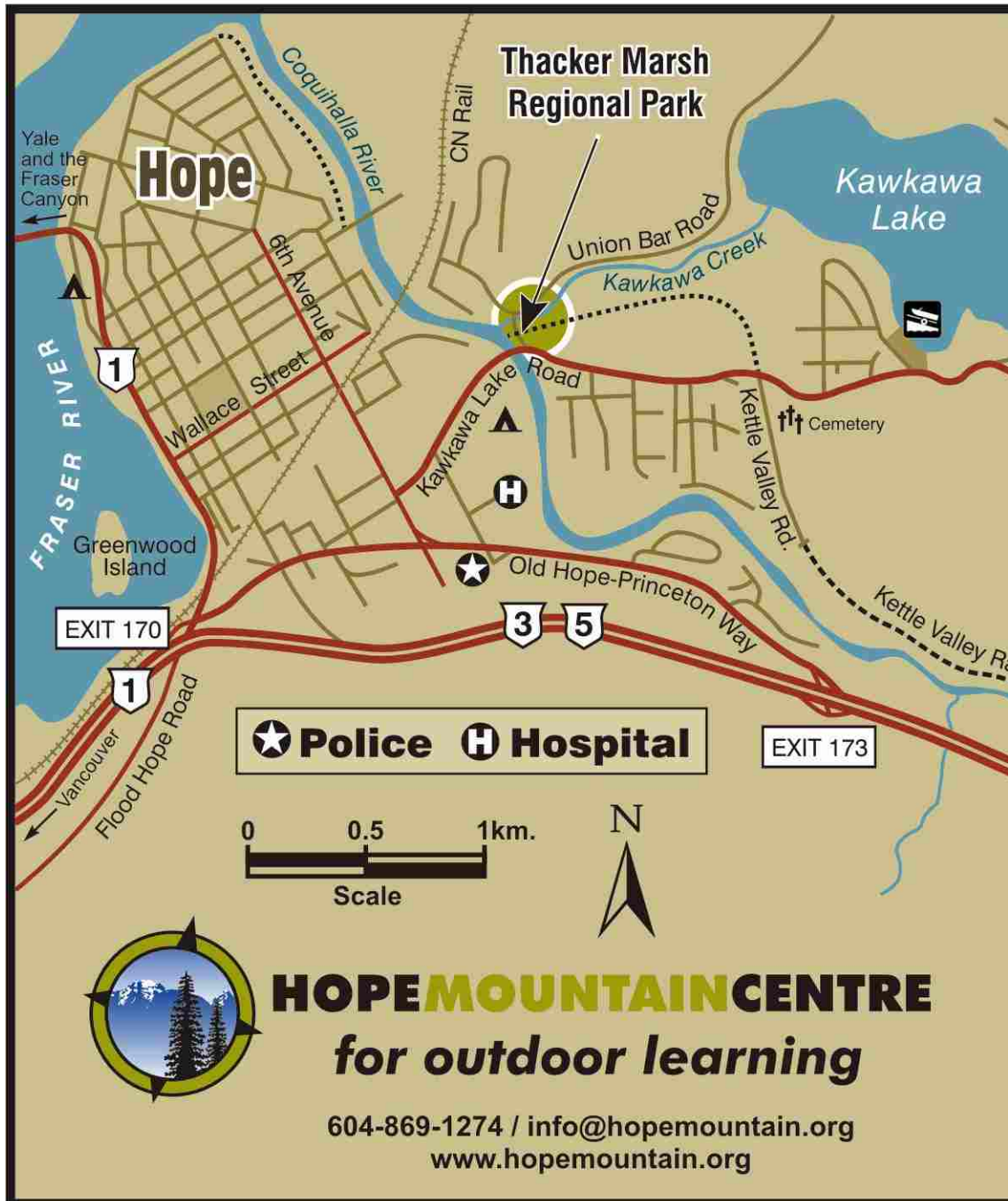
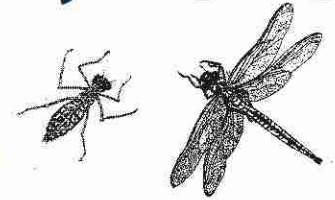


POND CREATURE CRAWL – May 29th, 2010



HOPE MOUNTAIN CENTRE
for outdoor learning

604-869-1274 / info@hopemountain.org
www.hopemountain.org



ITINERARY:

10:00 AM - meet at Thacker Marsh Regional Park.

12:00 noon - program ends*

* If you've got time, pack a picnic lunch and lounge at a beautiful beach within walking distance on the Coquihalla River.

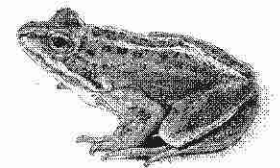


WHAT TO BRING:

- * Snacks and drinking water
- * Sun protection
- * Warm clothes
- * Gum boots or sandals for wading
- * Camera, binoculars

WE PROVIDE:

- * Dip nets
- * Buckets
- * Microscopes
- * Games and activities for all ages



The Healthy Hydration Company™



HOPE MOUNTAIN CENTRE
for outdoor learning